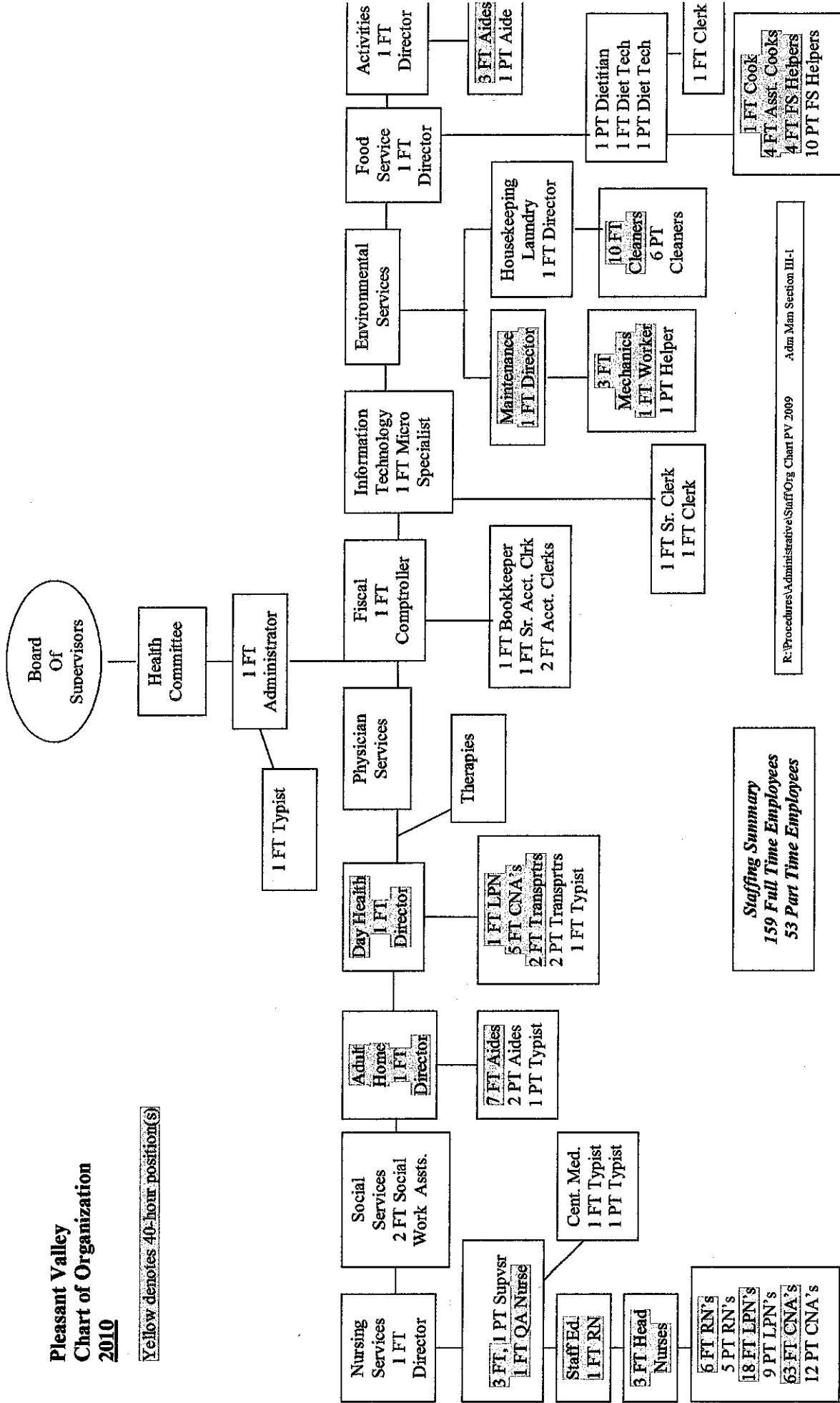


**Pleasant Valley
Chart of Organization
2010**

Yellow denotes 40-hour position(s)



Pleasant Valley			
<u>Staffing Changes</u>			
April 14, 2010			
	<u>Full Time</u>	<u>Part Time</u>	<u>Total</u>
2008	164	50	214
2010	159	53	212
<u>From 2008 to 2010</u>			
<u>Deleted</u>			
1 FT Asst. Director of Nursing			
1 FT Senior Account Clerk			
1 FT Administrative Secretary			
2 FT Cleaners			
1 FT Dietitian			
1 FT Clerk			
1 FT Laundry Worker			
1 FT Senior Clerk			
1 FT Supervisor Laundry/Housekeeping			
1 PT Clerk			
1 PT Clerk			
<u>Added</u>			
3 FT Certified Nursing Assistants			
1 FT Typist			
1 FT Senior Cleaner			
2 PT Typists			
2 PT Cleaners			
1 PT Dietitian			
<u>Potential Retirements</u>			
1 FT Bookkeeper			
1 FT RN Supervisor			
1 FT Typist			
1 FT Maintenance Mechanic			
1 PT Typist			

**Pleasant Valley
Chart of Organization
March 18, 2010**

Yellow denotes 40-hour position(s)

